



COMMERCIAL PROJECTS



to Airport /
downtown Minneapolis

American Blvd
11:00 AM



just better

Holland Stone™
Lightrail Platform, 2012 - Minneapolis, MN

BOLD AND BEAUTIFUL



At Borgert, our beauty isn't only skin deep, just look inside and see we use the finest ingredients available. We have the good fortune to be located in an area that is abundant in granite, making us the only manufacturer in the Midwest using granite aggregates in our products. Granite is famous for its strength, hardness and eternity. Building materials made with granite aggregates have a reputation for being virtually indestructible. That is why concrete pavers made with granite can provide a long term solution for anyone who wants their pavement to last a lifetime. What more peace of mind could you ask for?

BETTER PAVEMENT SYSTEMS

Interlocking concrete paving stones have been a proven paving material for a wide variety of applications for over 40 years, offering unique advantages such as resistance to severe loads, flexibility of repair, low maintenance, exceptional durability and high quality. Because an interlocking paving stone pavement is flexible, it withstands heavy loads and resists heaving from the effects of freezing and thawing.

THE POSSIBILITIES ARE ENDLESS

Design Without Limitations

TABLE OF CONTENTS

Nº:6	STREETS
Nº: 10	PUBLIC SPACES
Nº: 14	UNIVERSITIES
Nº: 18	ENTRYWAY/PLAZAS
Nº: 22	PERMEABLE
Nº: 26	THE SYSTEMS – ICP & PICP
Nº: 28	COLOR SELECTION GUIDE



Holland Stone™

Paragon Shopping Mall, 2014 - Eagan, MN



THE POSSIBILITIES
ARE ENDLESS

Holland Stone™

The Shops at West End, 2012 - St. Louis Park, MN

STREETS

Borgert's utilitarian pavers create a durable wearing course that can handle heavy traffic, yet is flexible to manage freeze thaw cycles. Utilities can be easily accessed and original pavers reinstated without a trace. Beautify, increase the value, and create a unique space. Potholes will not form and have to be handled every spring as with traditional pavements. Delineate lines and spaces with pavers to reduce maintenance and increase the aesthetic value.



*Holland Stone™
Osseo Streetscape, 2009 - Osseo, MN*





Holland Stone™
Nicollet Island, 1997 - Minneapolis, MN

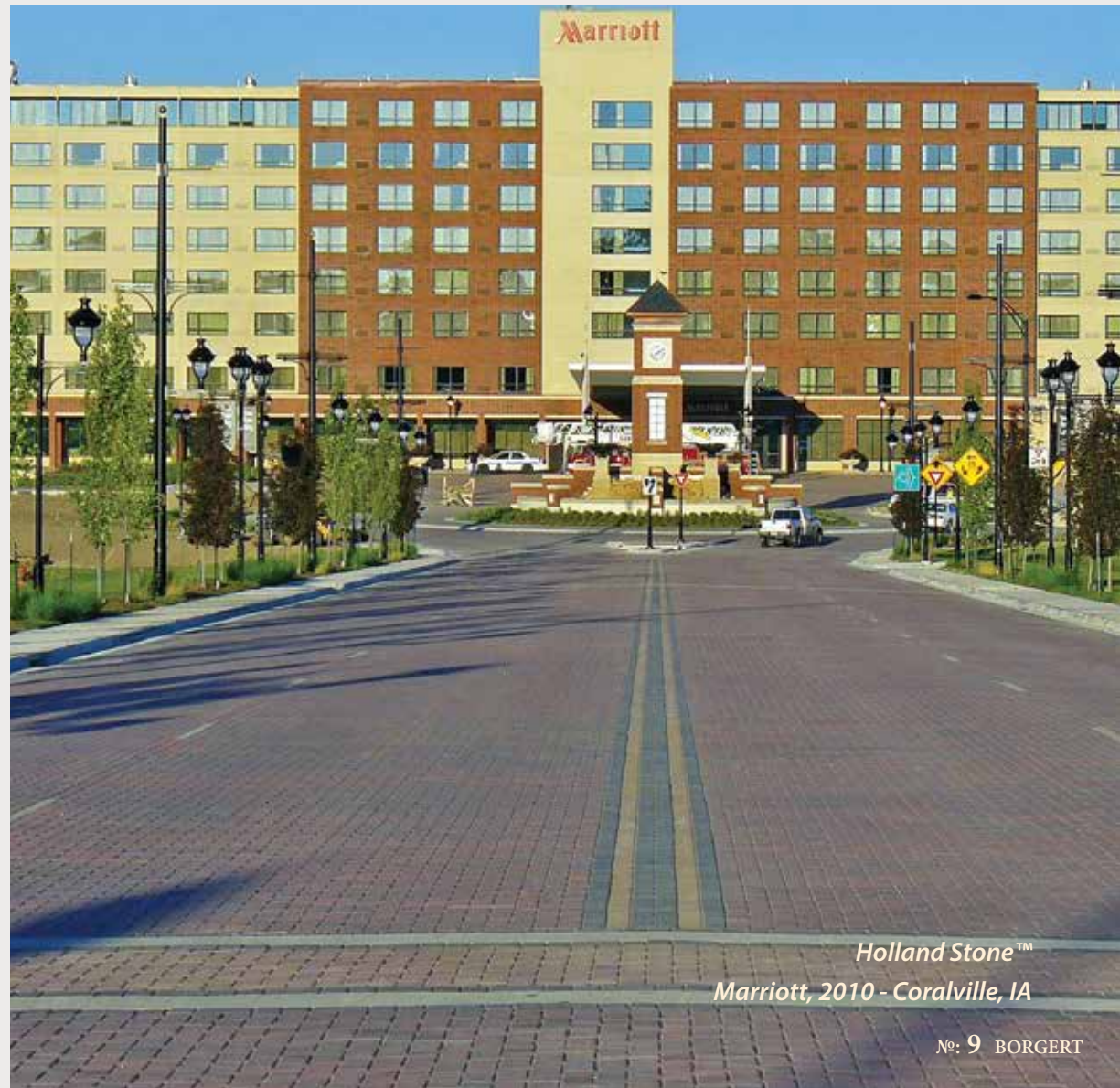


Holland Stone™
2012 - Coralville, IA



Borgert Pavers are made with granite which is one of the strongest aggregates. Granite makes the paver denser with lower absorption rates to withstand traffic and weather.

For the last 8 years all Coralville, IA commercial projects have specified Borgert Products.



Holland Stone™
Marriott, 2010 - Coralville, IA

PUBLIC SPACES

Borgert's pavers are all made to the same standard meeting the demands of architects and designers. Pavers can be applied in a number of fascinating patterns to create unique, enduring public gathering spaces.



Cobble Series™

Lake George, 2009 - St. Cloud, MN





Holland Stone™
Shoppes at Arbor Lakes, 1995 - Maple Grove, MN



Cracovia
St. John Cathedral, 2012 - Denver, CO



Bulovar™
Bellevue Station, 2015 - Denver, CO

UNIVERSITIES

Create unity and consistency throughout campus with Borgert's pavement. You can delineate spaces or create a design using the pavers themselves. Use different colors and pavers to enhance your campus and increase the aesthetic value while reducing maintenance costs.

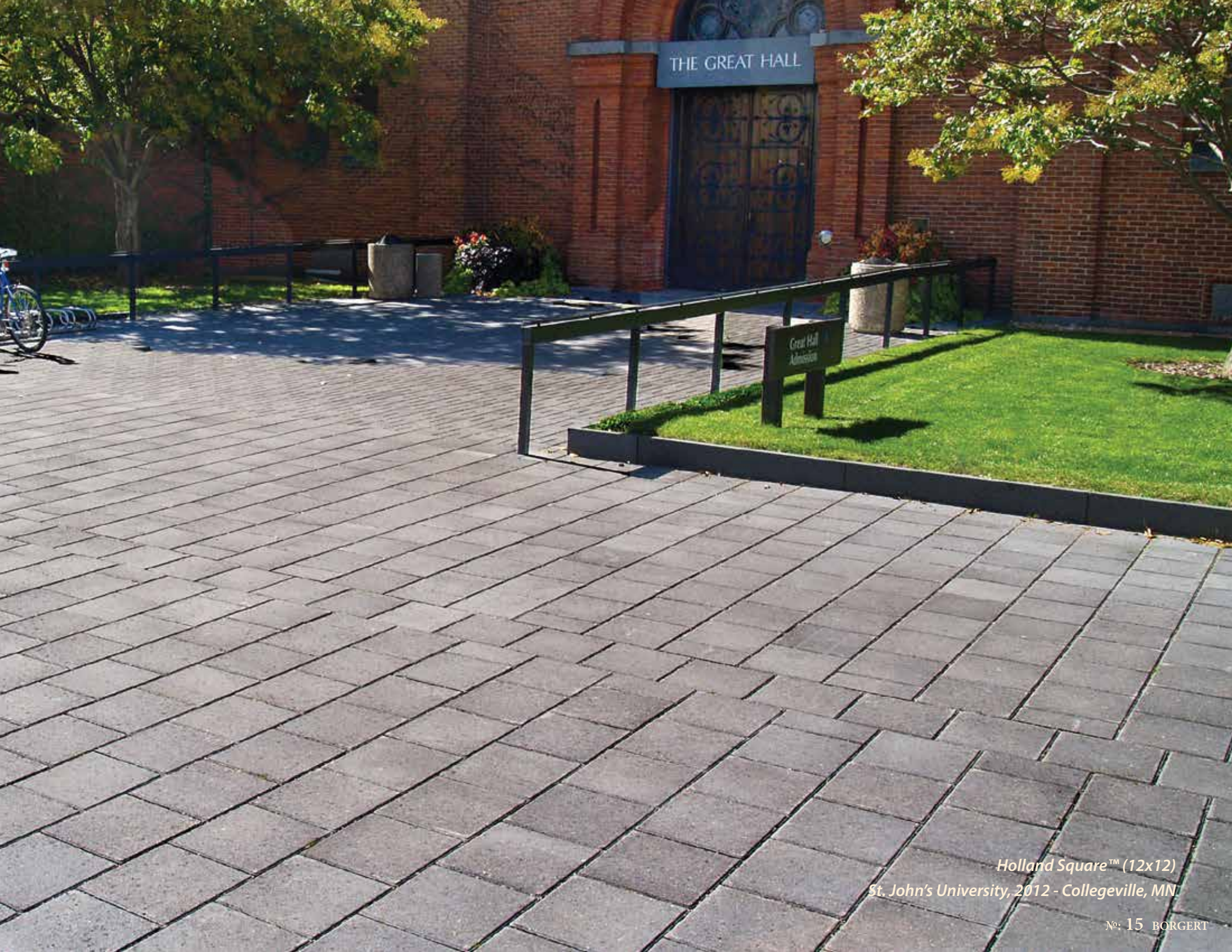


Symetry

Hamline University, 2000 - St. Paul, MN

№: 14 BORGERT





Holland Square™ (12x12)
St. John's University, 2012 - Collegeville, MN

№: 15 BORBERT



Holland Stone™

College of Saint Benedict, 2014 - St. Joseph, MN



Uni Decor
College of Saint Benedict, 2009 - St. Joseph, MN

ENTRYWAY/PLAZAS

Enhance the experience of visitors as soon as they enter a space. Create a uniquely identifiable area that attracts people. Color matching capabilities aid in complementing an existing architectural style.



Strassen® Bavaria
Terracina, 2008 - Broomfield, CO





Bulovar™

LBA Plaza, 2009 - Englewood, CO

№: 19 BORBERT



Holland Stone™
OSI, 2012 - Medina, MN



Holland Stone™
Fitzsimmons, 2005 - Denver, CO

№: 21 BORGERT

PERMEABLE, INTERLOCKING CONCRETE PAVEMENT

STORMWATER MANAGEMENT SOLUTION

Obtain the benefits of an interlocking concrete paver system with the addition of stormwater management. Permeable interlocking concrete pavement systems mitigate stormwater runoff through infiltration. This allows for reduction of volume and peak flows, improved water quality, filtering of pollutants, mitigation of downstream flooding and recharge of groundwater. You save space on sites, reduce ice and maintenance. Tree wells: provide clean, cool water for trees and space for roots to grow without compromising the surface or the tree.



*Holland Priora®
Creamery, 2013 - Elsworth, WI*





DrenaPave™
2014 - Fort Collins, CO

№: 23 BORBERT



DrenaPave™

College of Saint Benedict, 2014 - St. Joseph, MN

BORGERT'S WAY TO A CLEANER PLANET!

Borgerts' Drena™ Series is ADA compliant, strong interlock since the paver meets at straight edges all the way around large and angled joints to accommodate high infiltration rates on flats and slopes, aesthetically unique and pleasing.



DrenaPave™
REI, 2014 - Roseville, MN

INTERLOCKING CONCRETE PAVEMENT SYSTEM (ICP)

PERFORMANCE IN COLD CLIMATES

ICP does not crack or heave in the winter, so there is no need to seal or fill in holes in the spring. The same plowing method that is used for cement and asphalt roads is used on the pavers since there is a chamfered edge.

LIFELONG PAVEMENT

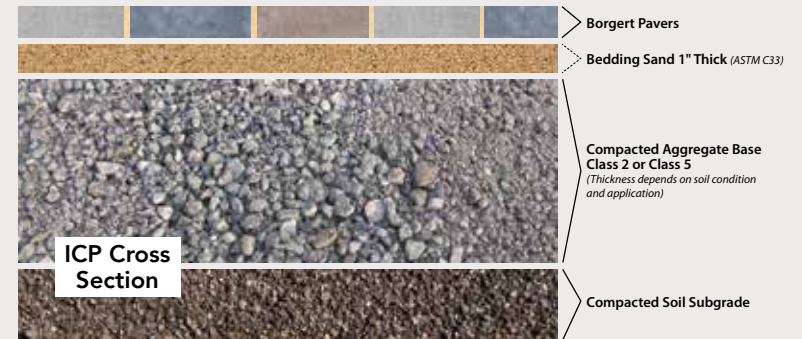
Borgert ICP can be designed to last over 50 years. The wearing course does not fade, crack or erode and the base can handle decades of stress. Individual pavers or sections of base can be easily replaced or repaired to restore the system to its original form.

FUNCTIONAL DESIGN

Contrasting paver colors can be used to delineate lines and spaces, eliminating the need to paint and maintain lines. They can designate parking spaces, crosswalks, boundaries and more.

EASY MAINTENANCE

Utility lines existing beneath the system can be accessed by unzipping the pavement and then replacing the same pavers when finished. There is no curing time following any repairs. Individual pavers or sections can be seamlessly restored.



Holland Square™ - 60mm

300mm x 300mm x 60mm
Approximate 11 7/8" x 11 7/8" x 2 3/8"
(PSF = 1 Stone @ 28#)



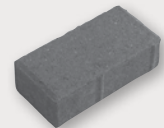
Double Holland™ - 60mm

200mm x 200mm x 60mm
Approximate 7 7/8" x 7 7/8" x 2 3/8"
(PSF = 2.25 stones @ 28#)



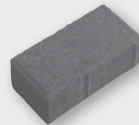
Holland Stone™ - 60mm

100mm x 200mm x 60mm
Approximate 3 7/8" x 7 7/8" x 2 3/8"
(PSF = 4.5 stones @ 28#)



Holland Stone™ - 80mm

100mm x 200mm x 8cm
Approximate 3 7/8" x 7 7/8" x 3 1/8"
(PSF = 4.5 stones @ 35.5#)



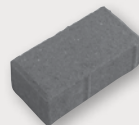
Holland II™ - 60mm & 80mm

60mm Height & 80mm Height
100mm x 200mm
Approximate 3 7/8" x 7 7/8"
(PSF = 4.5 stones @ 28#)



Holland Stone™ - 70mm

100mm x 200mm x 70mm
Approximate 3 7/8" x 7 7/8" x 2 3/4"
(PSF = 4.5 stones @ 35.5#)



Bulovar™ - Linear Slab - 100mm

3" x 15 3/4" x 4"
(PSF = 3.1 stones @ 44#)



PERMEABLE INTERLOCKING CONCRETE PAVEMENT (PICP)

ELIMINATE RUNOFF

Capture all stormwater that falls on the pavement and prevent it from contributing to harmful runoff.

PERFORMANCE IN COLD CLIMATES

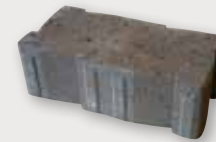
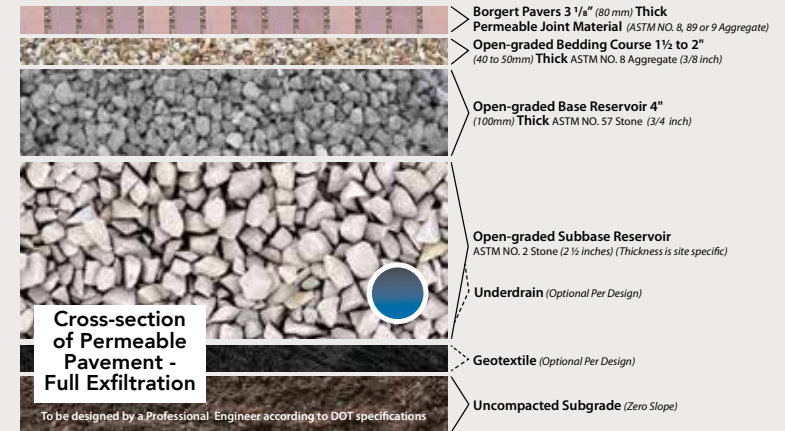
PICP does not crack or heave in the winter. Eliminate the use of sand and decrease the use of salt. Ice does not form on the surface and plowing is unchanged.

FUNCTIONAL DESIGN

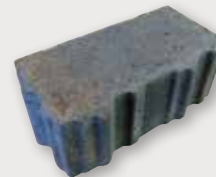
Create a unique design while elevating the impact of stormwater. Use contrasting colors to delineate lines and spaces, instead of maintaining painted lines. Allow your stormwater management system to be a usable pavement.

LIFELONG PAVEMENT

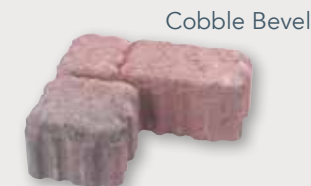
Borgert interlocking concrete pavement can be designed to last over 50 years. The surface will not fade, crack or wear and the base can handle decades of stress.



DrenaPave™ - 5" x 10" x 3 1/8"



Holland Priora® - 80mm
100mm x 200mm x 80mm
(PSF = 4.62 stones @ 35#)



Cobble Bevel



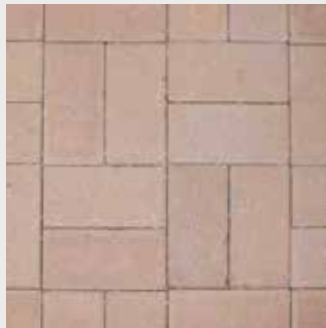
Standard Bevel

UNI Opti-Loc - 80mm
(PSF = 1.76 stones @ 35.5#)
Layer is 42" x 47.5"
NOTE: Mould configured for mechanical installation.

COLOR SELECTION GUIDE

SELECTING COLORS

Colors are shown as accurately as possible. Due to the nature of the product, color preference and variables in print reproduction, colors will not match exactly. Make final color selection from actual samples.



Chamois



Charcoal



Brown



Pewter



Red

CHOOSING BLENDS

Borgert Products manufactures pavers and walls in various blend colors that consist of either two or three colors. When choosing a blend, it is important to keep in mind that some of the pavers will be dominant in one of the colors and some will be a combination of the colors that are in that particular blend. (i.e., Millstream is a blend consisting of red & charcoal - some pavers will be entirely red, some will be entirely charcoal, and others will be a combination of the two colors.)

Note: The color options here are just a small representation of colors available. Colors are not limited to shapes that are shown. Borgert Products goal is to make your project stand out with unlimited color options. Discuss additional color options with Borgert Products Account Managers.



Autumn Blend*



Granite City*



Iron Range*



Minnesota River*



Millstream*



North Shore*



Bronze Granite*



Mesa*

*For best results always select from more than one cube at a time and pay attention to the number of cubes required for the color(s) selected. Three-color blends require six cubes or more for best blend results.

Colors are shown as accurately as possible. Due to the nature of the product, color preference and variables in print reproduction, colors will not match exactly. Make final color selection from actual samples.



Pewter**



Buff**

**Pewter and Buff meet SRI requirements.



Holland Square™
Woodbury Lakes, 2005 - Woodbury, MN

FAMILY OWNED AND OPERATED FOR OVER 90 YEARS

St. Joseph based Borgert Products, Inc. is committed to providing quality and service unmatched in the industry. Our location in Central Minnesota allows for the finest selection of premium aggregates in the country – granite is the hardest aggregate available. Utilizing these materials and creating a carefully proportioned mix design, Borgert is able to produce an extremely dense, high quality paver on state-of-the-art equipment. Borgert pavers provide the end user with exceptional durability, environmental integrity and low maintenance.



As well as being aesthetically pleasing to the eye, these pavers are an excellent alternative to poured concrete and asphalt. The granite aggregate not only offers the hardness factor, the dark color is also a benefit. It is industry standard that bits of aggregate can show on the surface of the paver and the darker aggregate is less noticeable than the lighter colored aggregates commonly available in other regions.

Borgert Products, Inc. comes with a pedigree.

TECHNICAL DATA

- All Borgert paving stones are made from a “no-slump” concrete mix utilizing quality color pigments and are compacted under extreme pressure and high-frequency vibration.
- Borgert paving stones have a compressive strength greater than 8,000 psi, have a maximum water absorption of 5% and will meet or exceed ASTM C-936 and freeze-thaw testing per section 8 of ASTM C67.
- Our pavers are manufactured in thicknesses of 2 3/8 in. (60mm) and/or 3 1/8 in. (80mm). The type of application will dictate which thickness/shape(s)/pattern is best suited for a successful project.





MANUFACTURER OF PREMIUM CONCRETE
PAVING STONES, SLABS & WALLS

OUR MISSION

Our mission is to produce premium interlocking concrete pavements and related products, with a responsibility to customer attention, employees and the environment.

COMMERCIAL WARRANTY

2 Year Limited Warranty for Interlocking Concrete Pavements and Permeable Interlocking Concrete Pavements

Borgert Products, Inc. warrants the structural integrity of its paving stones to the original purchaser for a period of 2 years from date of purchase and will replace any paver it deems to have failed. The original sales receipt is required for all warranty claims. Color matching is not guaranteed and replacement labor for installation is not included. Borgert Products has a minimum of one year from time of notice to make determination for replacement. This warranty does not cover normal wear and tear damage resulting from abuse, improper installation, or accidental damages. Efflorescence resulting in staining is not a manufacturing defect covered under this warranty. This warranty is void if material is not installed using Borgert Products, Inc recommended installation guidelines or if permeable is clogged from lack of maintenance. Borgert Products, Inc. shall not be liable for incidental, punitive, exemplary, indirect or consequential damages, or lost profits arising under or relating to the purchase and use of its Interlocking Concrete Pavements or Permeable Interlocking Concrete Pavements.

MEMBERS:



For technical information and complete product data, see Borgert's Product Resource & Installation Guide.

MAIN OFFICE: 8646 Ridgewood Road | St. Joseph, MN 56374 | 320.363.4671 | 800.622.4952

WESTERN OPERATIONS: 5170 Kalamath Street | Denver, CO 80221 | 303.783.3864

MADISON, WI LOCATION: 6402 Loftus Road | Madison, WI 53532 | 800.622.4952

DESIGN SHOWROOM: International Market Square | 275 Market Square | Minneapolis, MN 55405 | 800.622.4952

WWW.BORGERTPRODUCTS.COM



Borgert Products is a certified DBE business.

FiltraPave® Patent# 737,465/737,466

