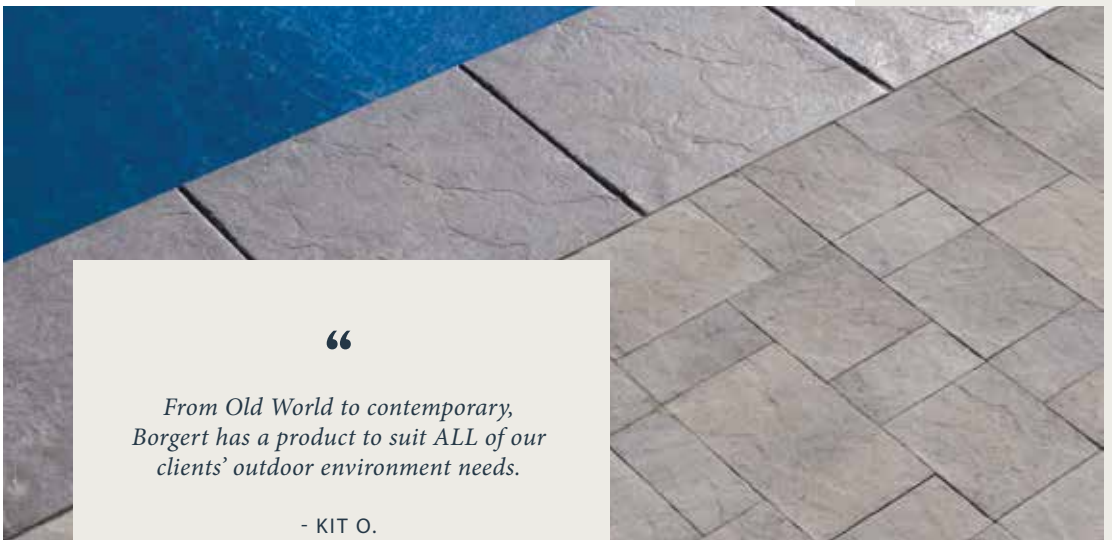




OUTDOOR  
LIVING *redefined*

*Respect • Integrity • Gratitude*



“

*From Old World to contemporary,  
Borgert has a product to suit ALL of our  
clients' outdoor environment needs.*

- KIT O.

”

# DESIGNED FOR *memories*

## Family Owned, Made in Minnesota

For 100 years Borgert has been family owned, made in the USA and proud to be a Minnesota manufacturer. We are among one of the first manufacturers of interlocking concrete paving stones in the US. Our line of products include pavers, slabs and retaining walls. We offer a wide range of colors, textures and sizes to create your dream project.

Have too much hardcover on your property? Our line of permeable interlocking pavers offer the solution so you can add on to your home or build that additional structure while maintaining environmental integrity.

Borgert Products cares about quality and we choose to use granite aggregates in all our products and we are the only manufacturer in the Midwest who uses granite aggregates.

## Why Granite?

Hardest aggregate next to diamonds which means:

- It doesn't absorb the color thus providing long-lasting vibrant color for many years
- Resistant to freeze/thaw so does not absorb moisture making the paver more durable
- It's an angular aggregate creating a stronger bond with the cement and color which is part of the paver components.

*Let's create together.*

Build on family time and memories. We welcome you to our family and together let's bring your vision to life.

## What's Inside Matters

The natural, hardest, granite... that is what makes our products the strongest.



PREMIUM QUALITY PRODUCTS

# LIMITLESS DESIGNS

---

## Delivering Features You Desire

Family owned and operated, Borgert Concrete Products, Inc. was established in 1923 by Lawrence A. Borgert in East St. Cloud, MN. In 1953, Lawrence's son, Kenneth J. Borgert, took over the business and relocated it to its current location in St. Joseph. As sole owner of Borgert Products, since 2006, I am proud to uphold the same values and traditions of quality products and service unmatched in the industry just as my Grandfather and Father did. In 100 years, we have survived some challenging times which has made us a strong leader in our industry today. We started out manufacturing block and precast and have evolved into Interlocking Concrete Paving Stones, Retaining Walls and Slabs, with 2023 marking the 46 year anniversary of manufacturing paving stones. Thanks to the creativity of our people and our engineering, we continue to design new and improved products, providing our customers better selections to build their dream landscapes.



“

*We have been using Borgert Products for many years, and I have to say their products have significantly helped us grow into the thriving business we are today.*

- ZACH P.

”

Ultimately, our Company's success is due to the hardworking team of people at Borgert Products. We are fortunate to have skilled and knowledgeable people who work hard to produce quality products, with impeccable service and commitment to our customers. In the 100 years that Borgert has been in business, many changes have occurred and I know that the founders of our Company would be as proud as I am for where we are today.

CEO

*built on*  
**I N T E G R I T Y**

# TABLE OF CONTENTS

---

- 01 Designed for Memories
- 02 Premium Quality Products, Limitless Designs
- 04 The Best Paving System
- 05 Interlocking Concrete Pavement

## 06 Slabs

- 08 Kastle Flats Textured & Smooth
- 12 Bulovar®
- 13 Bulovar® Max
- 16 BrükStone®

## 18 Traditional Paving Stones

- 20 LaLosa
- 22 Holland Stone™
- 26 Cobble™
- 30 Bavaria II™
- 34 Vavel II™

## 38 Strassen® Tumbled Paving Stones

- 40 Strassen® Cracovia
- 44 Strassen® Bavaria

## 48 Drena™ Permeable Pavements

- 50 DrenaPave™ & DrenaMontage™

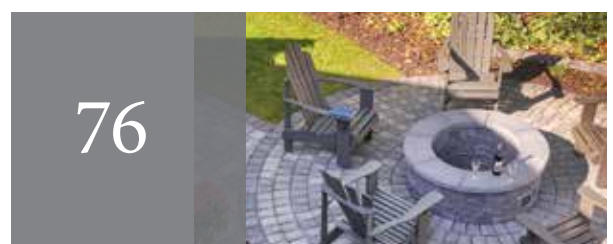
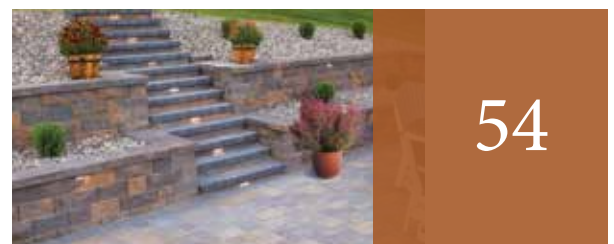
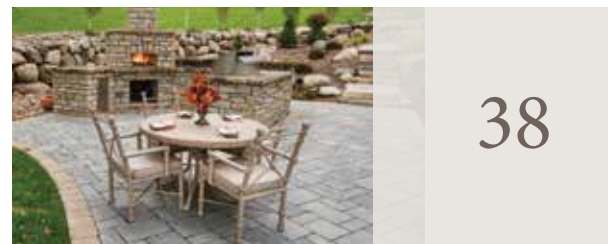
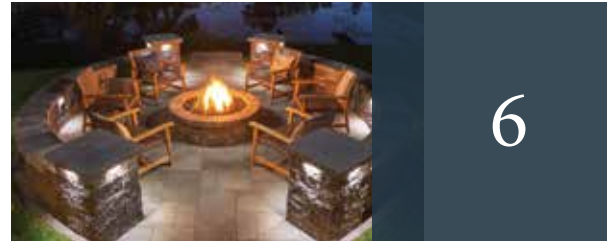
## 54 Walls & Step Units

- 56 Strassen® Wall & Strassen® Wall II
- 60 PanoMur® Wall
- 64 Madera Wall
- 68 Morteza Wall
- 72 Step Units

## 76 Accents from Borgert

- 78 Fireplaces & Fire Rings
- 80 King of Hearths Outdoor Fireplaces & Ovens
- 82 Precast Wall Cap & Pillar Caps

## 84 Color Selection



BORGERT'S PROMISE

# THE BEST PAVING SYSTEM

---

## Durability

The industry standards for Interlocking Concrete Pavers are 8,000 psi and no more than 5% absorption. Borgert pavers exceed these standards giving them an excellent wearing course. The combination of high psi, low absorption and the addition of color throughout means QUALITY pavers that will last for years to come.

## Flexible System

Bedding sand worked up between the pavers when they are compacted creates the "INTERLOCK", thus a flexible pavement that is resistant to heaving in freeze/thaw conditions. If there is settling in the pavement it can be easily repaired by taking up the pavers reworking the base and putting the same pavers back in place – no unsightly patchwork.

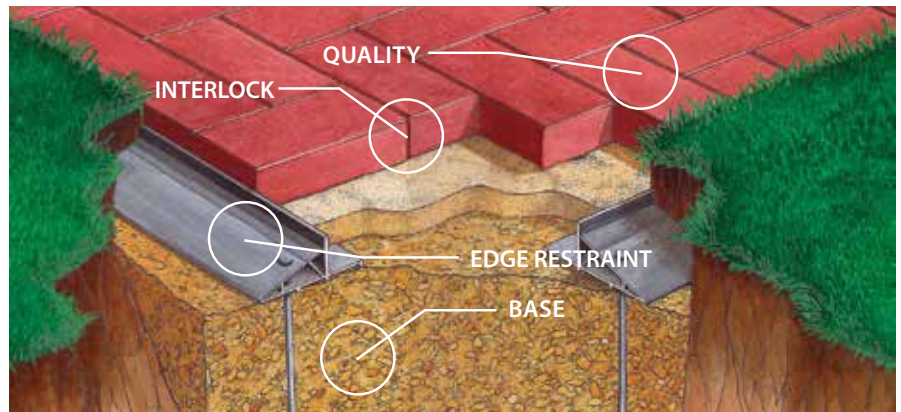
## Key to Successful Installation

As with any pavement, a proper BASE is critical to the performance of the pavement. With Interlocking Concrete Pavement, the difference is there needs to be an EDGE RESTRAINT.

## Important Note

*Refer to Borgert's Product Resource & Installation Guide or the DIY brochure for complete details on installation.*

*Permeable Interlocking Concrete Pavement is the same principal with the exception of the type of paver and the base is open graded aggregates.*



# ONGOING EDUCATION

---

We care about our customers if it be introducing new products to refreshing installation techniques. This is also a time to get to know each other better and hear directly from our end users their opinions on our products and services. Most importantly we will have ample time for round table discussions which will provide insight for all of us, all in the spirit of improving relationships and communication.

From the end of January through the first part of March Borgert Products will offer these informational opportunities. Contact your sales rep or the Borgert dispatch office for more details.

# INTERLOCKING CONCRETE PAVEMENT

## WHAT YOU SHOULD KNOW

---

### Maintain

Borgert pavers provide a durable yet decorative pavement — two big pluses. Like anything that is for outdoor use, they require a little care and maintenance. Clean pavement with a mild soap in the fall and spring or use cleaners specifically made for concrete pavers or walls. Check with Borgert Products or your hardscape supplier for what products they recommend. You should consider sealing driveways for more protection from street deicing chemicals.

### Efflorescence

A white haze known as efflorescence is a natural occurring process in concrete. Technically known as calcium hydroxide, it can come from a number of sources and appears as a white film when carried to the surface by moisture. It may appear randomly or in certain areas and is more pronounced on darker colors. The good news is efflorescence does not affect longevity or structural integrity of the pavers or walls. Although unsightly, in many cases it is scoured off during installation when compacting the pavers. It can also be removed using specialty cleaners, made for interlocking concrete paving stones or retaining walls. Otherwise, it will typically lessen or dissipate over time with rain, snow and wear. Because efflorescence can be a natural by-product of cement hydration, its presence is not indicative of a flawed or defective product. Efflorescence cannot be prevented, so as with all other manufacturers, this condition is not a warranty issue.



*For technical information  
and complete product data, see  
Borgert's Product Resource & Installation Guide.*

### Polymeric Haze *(does not apply to retaining walls)*

Interlocking concrete pavement (ICP) does not require a jointing material other than sand. Poly haze can happen when polymeric sands are not used properly and should not be confused with efflorescence. Since the use of poly sand is not an installation requirement, Borgert Products accepts no responsibility in the event of hazing. We suggest you contact your contractor or the manufacturer of the polymeric sand for their suggestions concerning their products.

### Snow, Ice and Deicers

Our pavers and walls are more than beautiful. They have the durability to withstand the harsh winters of the Midwest and, when properly installed, snow removal is no problem...either by shovel, snow blower or plow. For walls that are installed by sidewalks, driveways or streets we recommend that they be hosed off in spring for any residual deicing chemicals that may have splashed up on them.

Our pavers have a surface that is slip and skid resistant even when wet. Ice, on the other hand, can be slippery and common sense should be used to prevent slips and falls. We recommend sand for traction, as it can be applied liberally and as needed. Clean, untreated sand has no corrosive effect on concrete pavers or walls and it can be swept into the paver joints or removed by conventional sweeping or vacuuming.

Concrete pavers are robust in resisting the effects of deicing chemicals. We have manufactured pavers that have been exposed to salt for over 40 years! Nevertheless, deicing chemicals can be harmful to the pavers. If using a deicer, the ICPI recommends a NaCl sodium chloride. We recommend against the use of other types, including products that contain a blend of chemicals. Pavers exposed to any deicing chemicals must be properly cleaned and maintained. We recommend cleaners designed for concrete paving stones. Check with Borgert Products or your hardscape supplier for what product they recommend.

# SLABS

Kastle Flats

Bulovar®

Bulovar® Max

BrükStone®

With Borgert's slabs, inspiration comes easily when creating beautiful outdoor spaces. These paving pieces are larger in scale, giving a different look from traditional paving stones. Whether mimicking the look of a boardwalk or natural stones, our slabs will help you redefine your outdoor space in an unrivaled manner.





*your vision*  
BROUGHT TO LIFE

KASTLE FLATS

TEXTURED & SMOOTH  
KASTLE FLATS

---



TEXTURED



STERLING GRAY



CLASSIC BRONZE



LANNON

*Available in custom colors, call for quote.*



Create warm, majestic entrances or your own personal oasis to relax and enjoy with family and friends. Kastle Flats delivers with its large scale contemporary design with either a hint of texture or in smooth that completes the look of this elegant slab.







TEXTURED  
KASTLE FLATS

*a place to relax and*  
ENJOY THE VIEW

# BULOVAR®

---



*Available in custom colors, call for quote.*



3 x 16

Bulovar linear slab was developed especially to mimic the look of a classic boardwalk. While it creates a similar look, it is enhanced by the longevity of Borgert's premium concrete slabs. Use a combination of colors or only one to create the desired look and feel of your project. Can also be used in combination with the Bulovar Max for added interest.



GRAPHITE



PEWTER



SLATE



ADOBE

# BULOVAR<sup>®</sup> MAX



6 x 16

*Available in custom colors, call for quote.*

When the classic linear look is desired, Bulovar Max is a wider version of the Bulovar. Use a combination of colors or only one to create the desired look and feel of your project. Can also be used in combination with the Bulovar for added interest. Bulovar Max is suitable for driveway applications.



GRAPHITE



PEWTER



SLATE



ADOBE



*customize your*  
**PRIVATE GETAWAY**



# BULOVAR & BULOVAR MAX



# BRÜKSTONE®

---



MINNESOTA RIVER



NORTH SHORE



*beautifully varied*

## TEXTURED HARMONY

BrükStone is in the family of slabs designed with the elements of natural stone in mind. Not just any ordinary slab, the textured top and irregular sizes will harmonize with any desired setting. Made in rich earth tone colors and various sizes, BrükStone delivers a pavement that gives you the look and feel of natural stone.



*Varied sizes for  
the look and feel  
of natural stone.*

# TRADITIONAL PAVING STONES

LaLosa

Holland Stone™

Cobble™

Bavaria II™

Vavel II™

Whether you're dreaming of a new patio, an outdoor living room or a simple walkway, we can help you create it with style. Borgert's paving stones come in a wide range of textures, colors, shapes and styles. Imagine your outdoor kitchen defined by a timeless herringbone design or a large poolside patio made of an intricate pattern of squares and rectangles in a variety of colors. Whatever outdoor space you're creating, Borgert has the paving stones you need to create a lasting impression.





*create your own*  
**PRIVATE OASIS**

COBBLE™

# LALOSA

---



IRON RANGE



MINNESOTA RIVER



STERLING GRAY



LANNON



LaLosa is a smaller scale product that has the contemporary look of its larger scale counterpart. Add the modern touch to residential driveways, walks or patios. Available in 3 sizes that are packaged separately allowing flexibility to your specific design.



## ADDITIONAL BORDER *or* ACCENT COLORS

6x9 Only



GRAPHITE



SADDLEBACK



# HOLLAND STONE™

---



CHAMOIS



CHARCOAL



AUTUMN BLEND



STERLING GRAY



NORTH SHORE



IRON RANGE



MINNESOTA RIVER



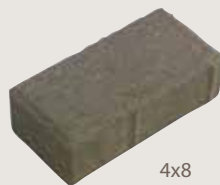
SADDLEBACK





Holland Stone is simple in design, offering a traditional classic look. Or create interest in a number of fascinating patterns with the simplicity of one stone. With the many colors to choose from, you can create bold or subtle accents.

*simply traditional*  
**CLASSIC DESIGN**





*a place to gather*  
OUTSIDE IN NATURE

# HOLLAND STONE™



# COBBLE™



AUTUMN BLEND



MINNESOTA RIVER



IRON RANGE



NORTH SHORE



STERLING GRAY



BRONZE GRANITE





Calling to mind the distinctive look and feel of European cobblestones, Borgert's Cobble is a beautiful reminder of time since past. It consists of several different sizes and a variety of colors, making the number of potential pattern designs virtually unlimited. You can add interest to your Cobble project by adding circles. The packaging of the Cobble Circle makes it easy to order just what you need to create circles and without any cutting! You can create circles of any diameter, or even a half circle. The design possibilities are endless. It is this flexibility which has made Cobble one of the most popular paving systems.

## ADDITIONAL BORDER *or* ACCENT COLORS







COBBLE™

*your favorite place to*  
STAYCATION

# BAVARIA II™

---



MINNESOTA RIVER



NORTH SHORE



STERLING GRAY

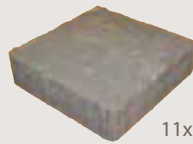


IRON RANGE





11x16



11x11



5x11



5x5

The unique look of Bavaria inspired us to offer a special untumbled version. The unique design of the edge without the aging creates the cobblestone look, with a sharp, clean, textured appearance. The Bavaria II is suitable for projects whether the look is old-world or contemporary.

## ADDITIONAL BORDER *or* ACCENT COLORS

Charcoal 5x5 & 6x9 | Graphite 6x9 Only



CHARCOAL



GRAPHITE





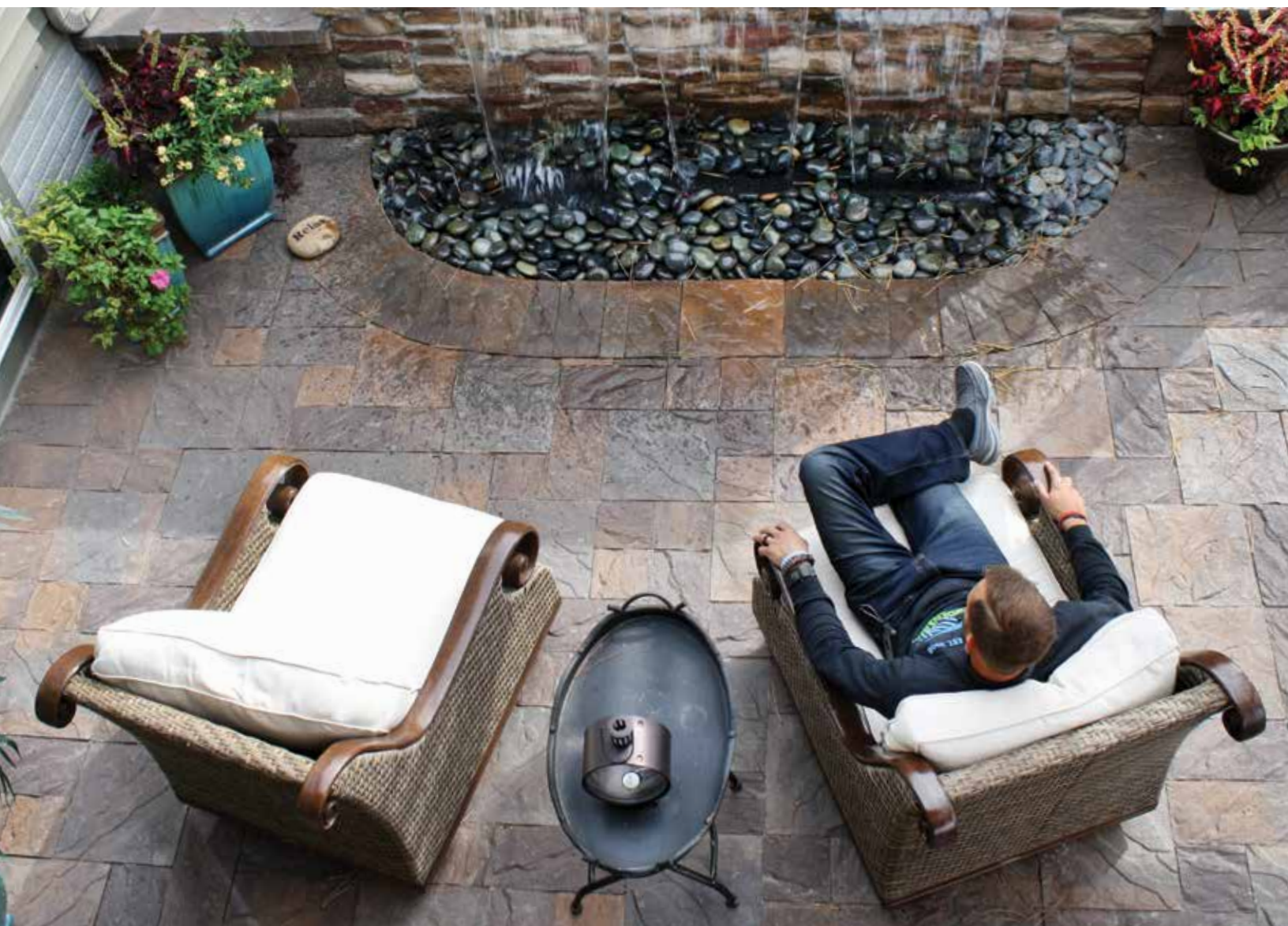
# BAVARIA II™



*the best way to make a*  
**FIRST IMPRESSION**

# VAVEL II™

---



IRON RANGE



MINNESOTA RIVER



NORTH SHORE



STERLING GRAY



14x14



7x14



7x7

Vavel II is the untumbled version of our Vavel. This paver offers the clean textured surface of stone and clear crisp edges to create a more contemporary look. The rich earthy color tones and multiple sizes will create a patio or driveway that resembles natural stone without the expense.





*a true textural*

CONTEMPORARY BEAUTY

# VAVEL II™



# STRASSEN® TUMBLED PAVING STONES

Strassen® Cracovia

Strassen® Bavaria

If you're looking for a more subtle and natural feel, our tumbled paving stones are your answer. These pavers have a weathered appearance that give a sense of history and elegance. Yet they perform just as well as our other products. Tumbled paving stones are a tasteful option that provide a legacy of unrivaled strength and style for your walkways, patios and driveways.







STRASSEN® BAVARIA

STRASSEN®  
CRACOVIA

---



MINNESOTA RIVER



GRAND CANYON



IRON RANGE



NORTH SHORE



STERLING GRAY



Going back to the Stone Age when people's ideas of building were somewhat limited, Borgert Products created a simple, yet durable eye-catching system. Our tumbling process creates a sculpted appearance to each paver and our carefully formulated new colors will take you back to Medieval times. In addition, this line comes in sizes configured to create full circles, half circles or arches. A unique feature of our circle stones is that one side has a more textured edge and the other is softened, use whichever fits your taste. This system protects your investment by ensuring performance in its simplicity.



9x9



6x9



6x6



3x6

## ADDITIONAL BORDER *or* ACCENT COLORS

4x6 Only



CHARCOAL





*a lovely entrance*

DESIGNED TO IMPRESS

STRASSEN®  
CRACOVIA



STRASSEN®  
BAVARIA

---



MINNESOTA RIVER



NORTH SHORE



STERLING GRAY



IRON RANGE



11x16



11x11



5x11



5x5

As you travel through the northern part of the Alps, you see a majestically curved landscape called Bavaria. With this picture in mind, we designed a large-scale paver with a top that resembles aged natural stone roads. This four-piece system offers you endless design possibilities to satisfy your creative imagination. This design comes in a color palette of deep earth tone colors. We assure you that Bavaria will give a luxurious look to your outdoor space.

## ADDITIONAL BORDER *or* ACCENT COLORS

Charcoal 5x5 & 6x9 | Graphite 6x9 Only



CHARCOAL



GRAPHITE

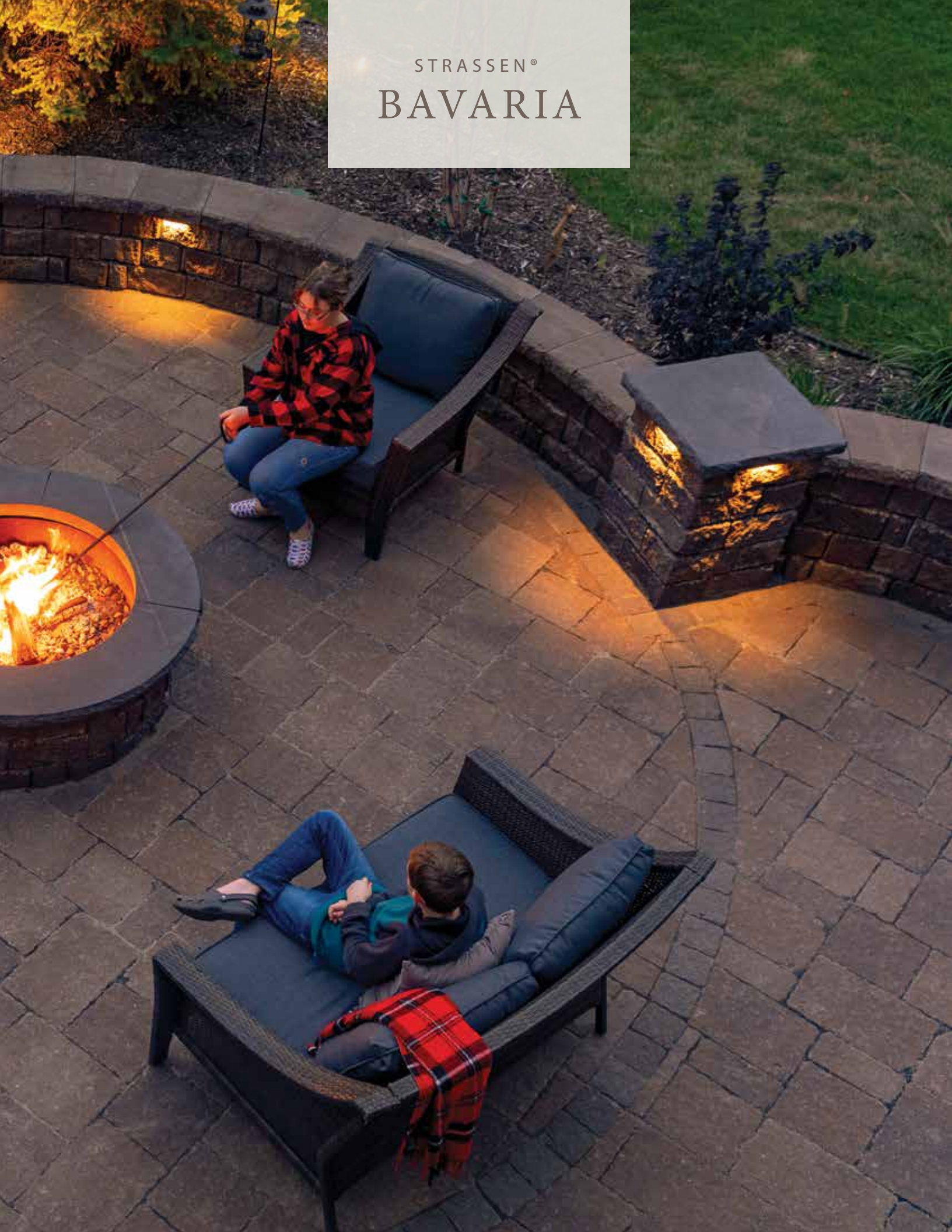




*cozy up and*  
**STAY A WHILE**



STRASSEN®  
BAVARIA



# DRENA™ PERMEABLE PAVEMENTS

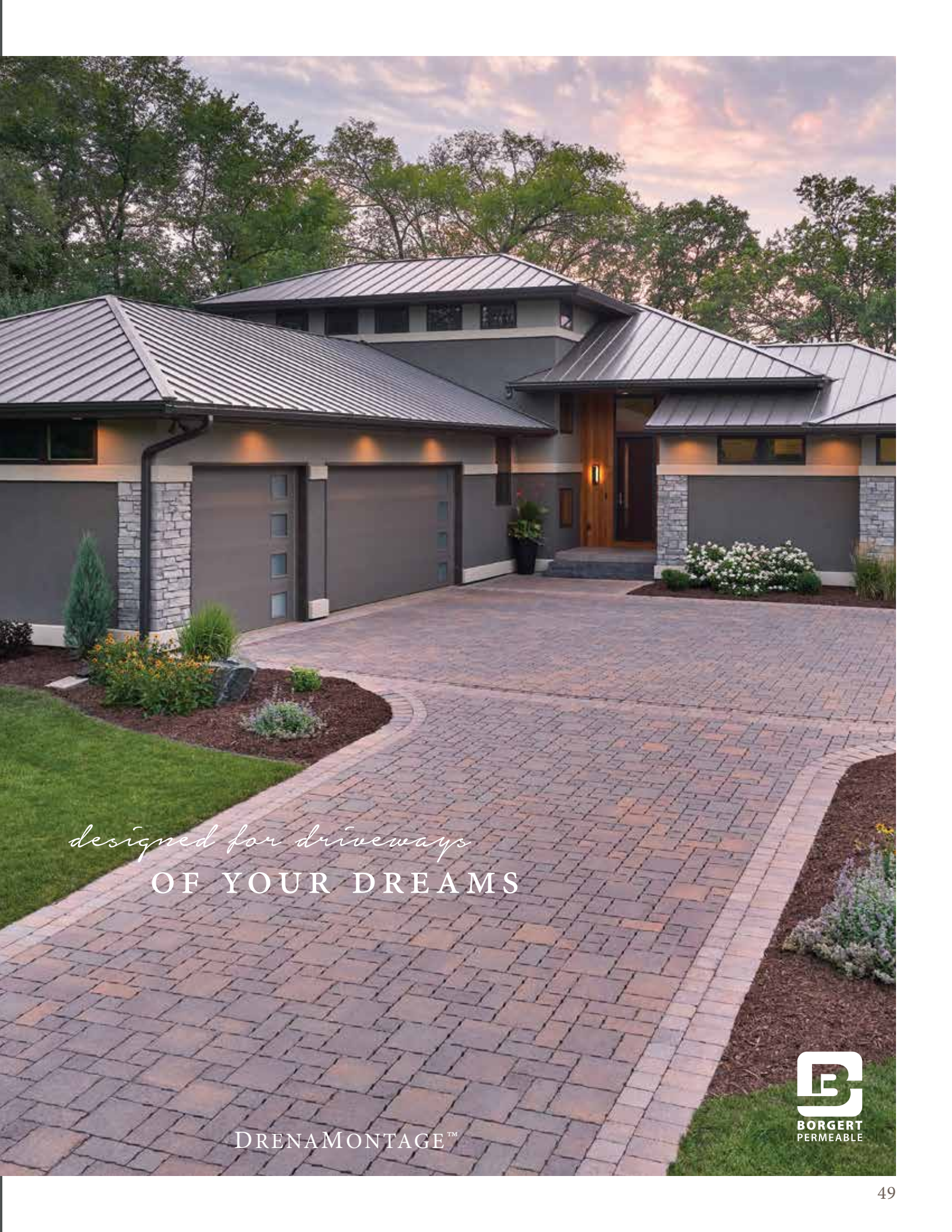
DrenaPave™

DrenaMontage™

When you're looking for a hard outdoor surface for your patio, walkway, or driveway, but have concerns about hard cover, then our permeable pavement system is the right choice. This product allows water to filter through it easily, so you can be confident that you're helping conserve our ecosystem. With Borgert, you can support a clean, healthy environment and create a distinctive, beautiful outdoor space.

*Permeable Pavements Require Maintenance & Engineering*





*designed for driveways*  
**OF YOUR DREAMS**

DRENAMONTAGE™



**BORGERT**  
PERMEABLE

DRENA™  
DRENAPAVE & DRENAMONTAGE

---



MINNESOTA RIVER



STERLING GRAY



## DrenaPave™



## DrenaMontage™



Borgert's Drena™ is a permeable pavement system perfectly designed for patio, walkway or driveway applications. If you are increasing the size of your current home or wanting to build an outbuilding, Drena™ is the answer for meeting local permits where hard cover is an issue. Recharge the groundwater and keep dirty stormwater out of our lakes and streams. DrenaPave allows you to be environmentally responsible for future generations.



*kick up your feet*  
AND RELAX A WHILE



# DRENAMONTAGE



# WALLS & STEP UNITS

Strassen® Wall

PanoMur® Wall

Madera Wall

Morteza Wall

Step Units

If you need a wall or set of stairs to accommodate hills or to simply add some interest to your landscape, we have a wide range of choices for you. With wall and step units in deep earth tones and varying textures, you can complement your outdoor space while providing the engineering elements you need.

Borgert will help you define and design outdoor living the way you want – with beauty and structural integrity.







MORTEZA WALL

# STRASSEN® WALL & STRASSEN® WALL II

---



TUMBLLED & SMOOTH

TUMBLLED



MINNESOTA RIVER



IRON RANGE



NORTH SHORE



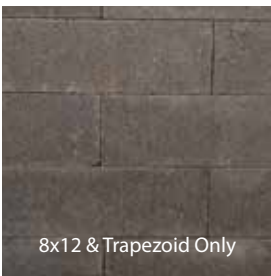
STERLING GRAY



8x12 & Trapezoid Only

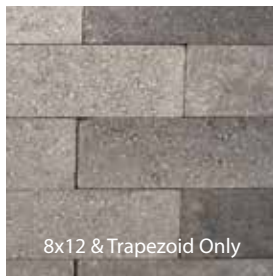
CHARCOAL

UNTUMBLLED



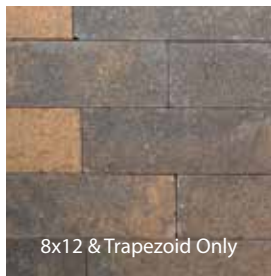
8x12 & Trapezoid Only

CHARCOAL



8x12 & Trapezoid Only

STERLING GRAY



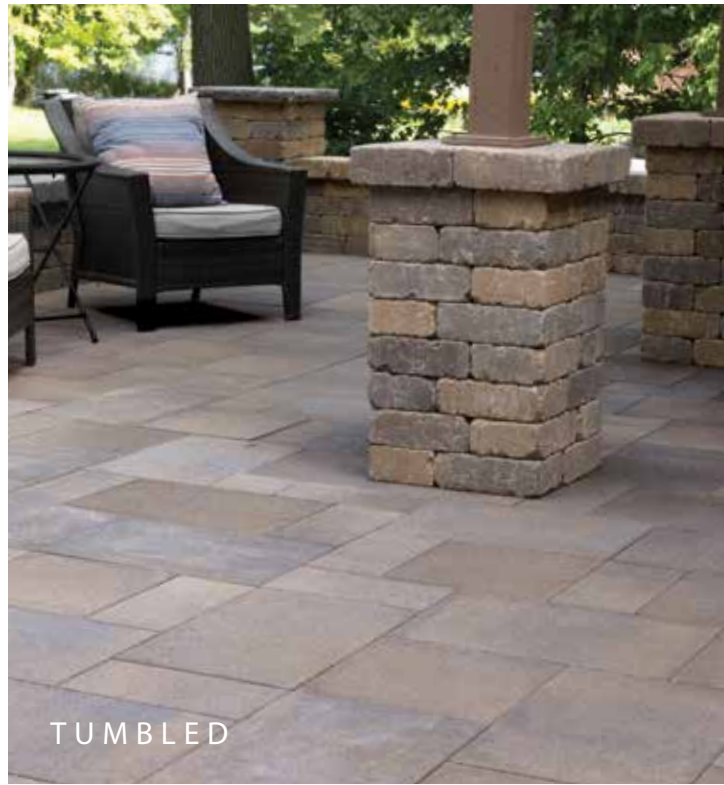
8x12 & Trapezoid Only

MINNESOTA RIVER

*untumbled for*

**CLEANER LINES**

TUMBLLED



8x12



8x8



Trapezoid



4x8

TUMBLLED



The Strassen Wall provides the look of old weathered stone, with four sizes available. Add charm and elegance where you need a small retaining wall. This is the only wall that gives you the flexibility you need to create a unique wall with non-conventional lines. For added elegance, you can easily build a freestanding wall that can include a sitting area, steps and/or pillars.

For a cleaner more contemporary look, Strassen II is untumbled and available in three colors as noted on opposite page.



*textural dreams*

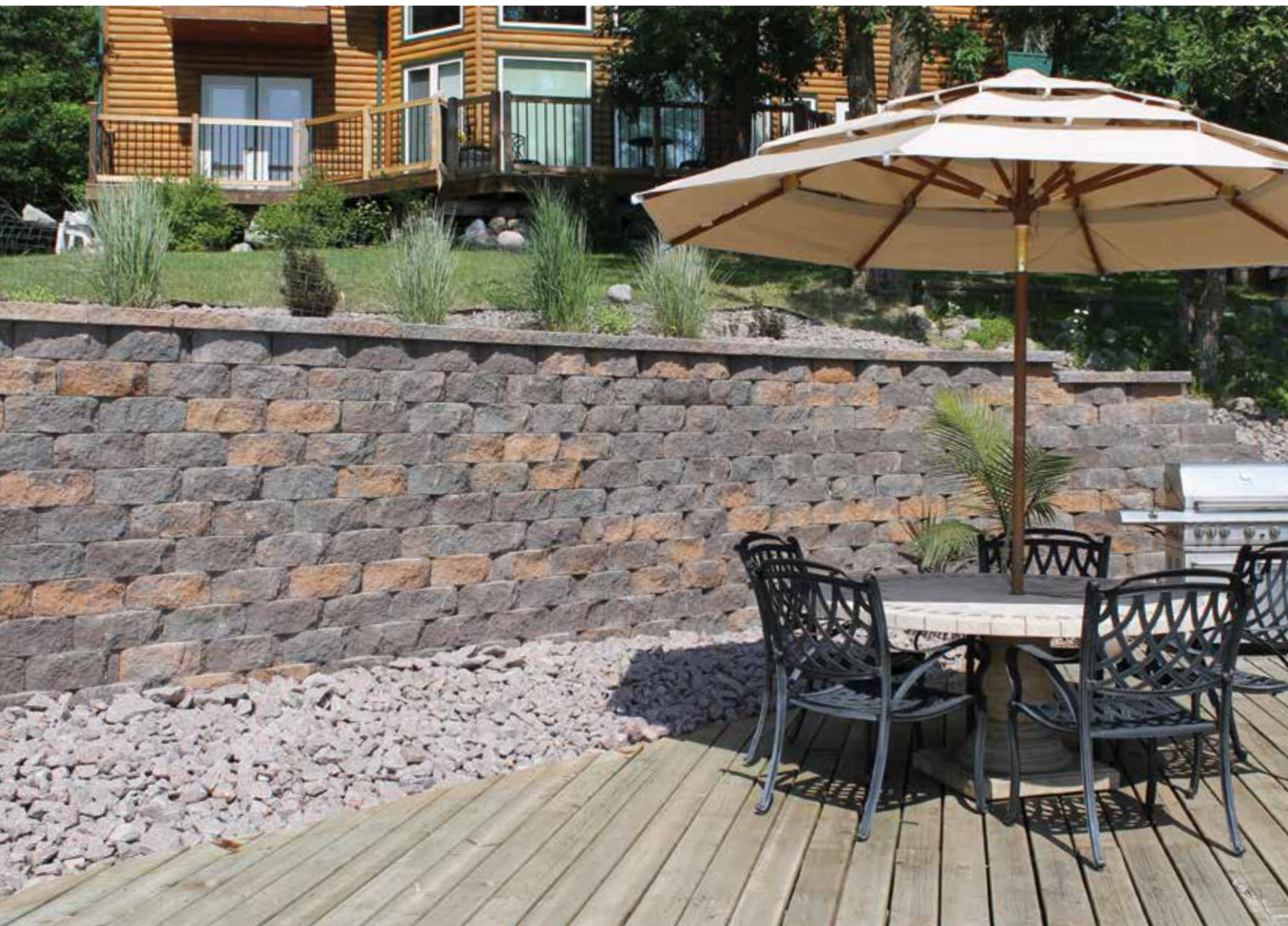
DO COME TRUE

# STRASSEN® WALL



CURVED & STRAIGHT FACE  
PANOMUR® WALL

---



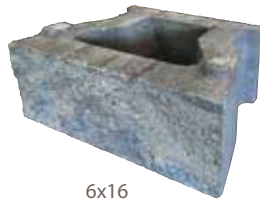
STERLING GRAY



MINNESOTA RIVER

*hollow core for easier*  
**INSTALLATION**

Installation Advantage – PanoMur lightweight units have a large hollow core, unique SecureLug™ connection and tapered sides. These features allow maximum flexibility, ease of installation and cost savings while maintaining high structural integrity for both gravity and geosynthetic reinforced walls. PanoMur units are textured with a curved or straight split face. Unit shapes and sizes are balanced to provide a natural profile – complementing any design or style construction. PanoMur is manufactured in a variety of blended earth tone colors to enhance any natural surrounding.



6x16



6x16



*embrace the elegance*  
**OF BEAUTIFUL CURVES**



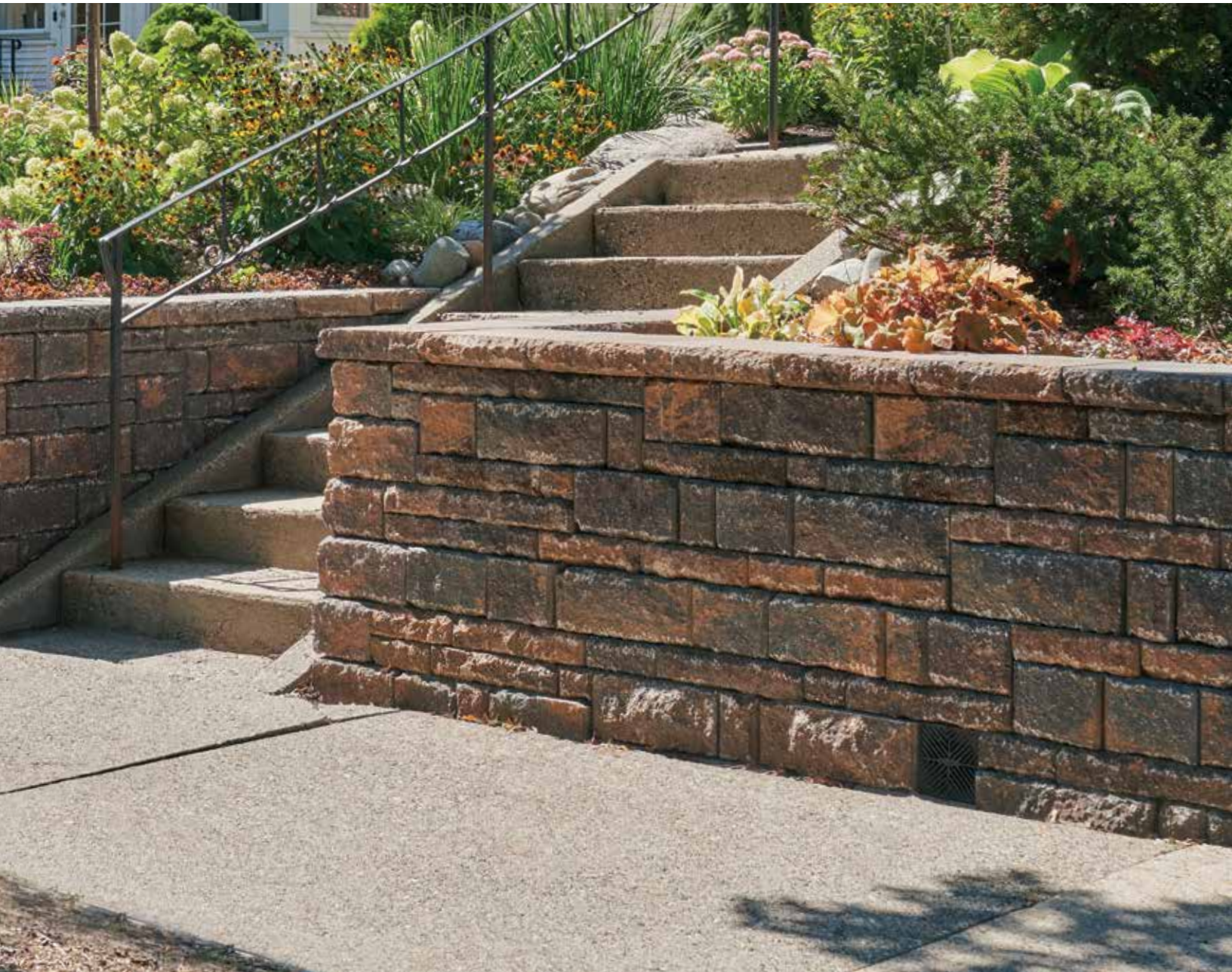


# PANOMUR® WALL



# MADERA WALL

---



IRON RANGE



MINNESOTA RIVER



NORTH SHORE



STERLING GRAY



28x12



24x12



16x12



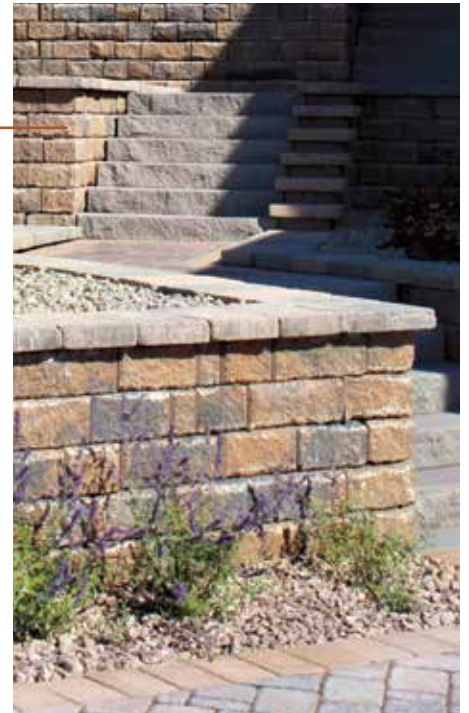
12x12



8x12

*enjoy a wall-deserved*  
**ELEVATED LOOK**

This unique retaining wall design that has five different sizes and two heights is called Madera. It is hard split then antiqued to give it the natural stone effect. It can be designed for freestanding or gravity walls – two functions in one. The most unique aspect of this wall is that there are no mechanical connections such as lips or pins – meaning no extra costs or hassles. This wall will give you more choices than any other wall on the market. The units are available in two heights, 3" and 6" and range in length from 8" to 28". Because of the wall's unique configuration, it makes it easy to create a wall with multiple sizes.





*cleverly designed to*  
**DEFY GRAVITY**

# MADERA WALL



# MORTEZA WALL

---



IRON RANGE



MINNESOTA RIVER



NORTH SHORE



STERLING GRAY



This unique retaining wall that has five different sizes and two heights is called Morteza, the sister to Madera. It is hard split and not antiqued to give it a cleaner line. It can be designed for freestanding or gravity walls – two functions in one. The most unique aspect of this wall is that there are no mechanical connections such as lips or pins – meaning no extra costs or hassles. This wall will give you more choices than any other wall on the market. The units are available in two heights, 3" and 6" and range in length from 8" to 28". Because of the walls unique configuration, it makes it easy to create a wall with multiple sizes.



24x12



28x12



16x12



12x12



8x12







# MORTEZA WALL

*elegant stairs*

MADE FOR NEXT STEPS

# STEP UNITS

---



CHARCOAL



NORTH SHORE



BUFF



MINNESOTA RIVER



STERLING GRAY



IRON RANGE

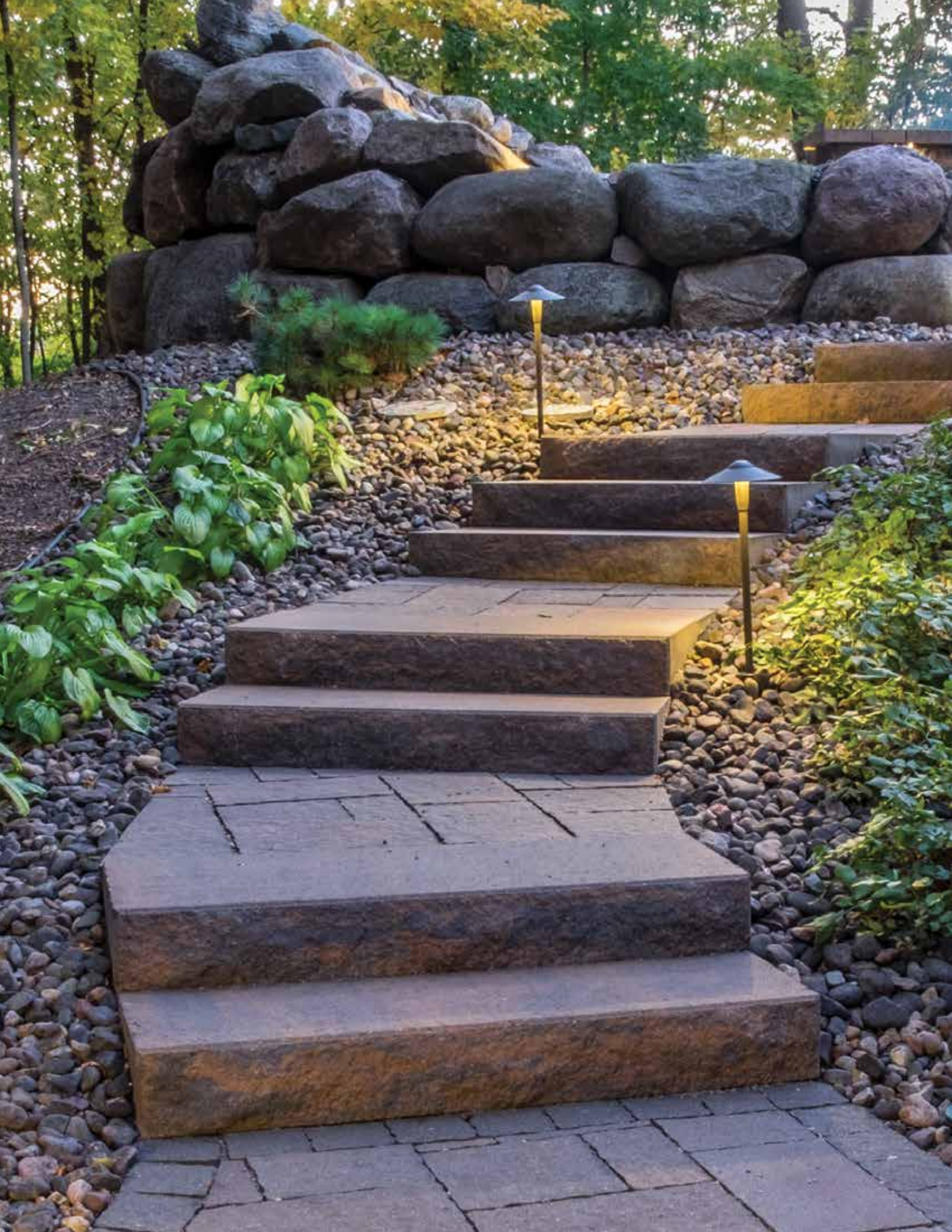


6 H x 18 D x 48 W



Our 6 H x 18 D x 48 W Step Unit is an attractive and cost-effective alternative to using expensive granite or natural stone. The Step Unit can be cut or split to fit your installation and is a lot easier to install than smaller retaining wall step units.

*easy steps that make a*  
**LASTING IMPRESSION**





# STEP UNITS

*designed to make*  
A GRAND ENTRANCE

# ACCENTS FROM BORGERT

Fireplaces, Ovens & Fire Rings

Precast Wall Cap & Pillar Caps

It is rigorous attention to detail that gives your Borgert landscaping that dramatic appeal. Sturdy, straight-lined Wall and Pillar Caps, stunning Fireplaces, Ovens and Fire Rings all become the focal point of any outdoor living space. Let Borgert complete your outdoor living space today.





FIRE RING

# FIREPLACES & FIRE RINGS

---



## FIRE RING

Like a cozy family room fireplace, Borgert Products offers an outdoor unit to give you the same warmth as inside your home. The fireplace unit is constructed from high-strength, lightweight concrete and fully lined with fire brick. The fireplaces are engineered for mortarless veneering with our Strassen Wall units or veneer with brick, natural stone or cultured stone. Imagine the good times with your family and friends as you enjoy the ambiance of a crackling wood fire and marshmallow roast. Prepare great meals and entertain outside using our outdoor ovens. Gather around our fire ring using wood or gas and enjoy the warmth. The quality and simplicity of installation makes this an affordable option for fireplaces and ovens.





SQUARE FIRE PIT



*an ambiance that's*  
**WARM & COZY**



# KING OF HEARTHS

OUTDOOR FIREPLACES & OVENS



**KING ARTHUR**

# OUTDOOR FIREPLACES & OVENS

GUINEVERE



LANCELOT



# PRECAST WALL CAP & PILLAR CAP

---



*designed for*  
**EASY LIVING**



## PILLAR, ROUND FIRE PIT & WALL CAP ACCENT COLORS

*Caps are not manufactured by Borgert.*



CHARCOAL



LIMESTONE



# COLOR SELECTION

---

*Colors are shown as accurately as possible. Due to the nature of the product, color preference and variables in print reproduction, colors will not match exactly. Make final color selection from actual samples.*

## Selecting Colors

Colors are shown as accurately as possible, but weather conditions such as shade and sun as well as additional lighting added during the photographic process can alter the way color appears. Due to the nature of the product, color preference and variables in print reproduction, colors will not match exactly. Make final color selection from actual samples. For best blend results always select from multiple cubes.

## Choosing Blends

Borgert manufactures pavers and walls in various blend colors that consist of either two or three colors. When choosing a blend, it is important to keep in mind that some of the pavers will be dominant in one of the colors and some will be a combination of the colors that are in that particular blend. (i.e., Minnesota River is a blend consisting of Chamois, Brown & Charcoal — some pavers will be entirely Chamois, some pavers will be entirely Brown, some will be entirely Charcoal, and others will be a combination of the two or three of these colors.)

## Resource Guide

For installation, packaging and more design pattern options request Borgert's resource guide.



“

*When we built our house, we wanted a distinctive back yard patio, so we chose Borgert's Vavel II pavers. These pavers have a distinctive textured surface that makes them look almost old world. To finish off the patio, we bought the round fire pit kit by Borgert Products which was easy to install ourselves. We couldn't be happier with our beautiful patio.*

- ERIK S.

”

	ADDOBE	AUTUMN BLEND	BRONZE GRANITE	BUFF	CHAMDIS	CHARCOAL	CLASSIC BRONZE	GRAPHITE	GRAND CANYON	IRON RANGE	LANNON	LIMESTONE	MINNESOTA RIVER	NORTH SHORE	PEWTER	SADDLEBACK	SLATE	STERLING GRAY
<b>Cobble Series™</b>		●	●					●				●	●					●
<i>Cobble Accent Colors</i>					● 6x9, 4x6	● 6x9, 4x6	● 6x9, 4x6								●			
<b>Holland Stone™</b>		●			●	●		●				●	●		●			●
<b>Holland Stone™ (80mm)</b>					●													
<b>Bavaria II™</b>								●				●	●					●
<i>Bavaria II™ Accent Colors</i>					● 6x9, 5x5		● 6x9 Only											
<b>Vavel II™</b>								●				●	●					●
<b>LaLosa</b>								●	●			●						●
<i>LaLosa Accent Colors</i>							● 6x9 Only								● 6x9 Only			
<b>Strassen® Cracovia</b>								●	●			●	●					●
<i>Strassen® Cracovia Accent Colors</i>						● 4x6 Only												
<b>Strassen® Bavaria</b>								●				●	●					●
<i>Strassen® Bavaria Accent Colors</i>					● 6x9, 5x5		● 6x9 Only											
<b>DrenaPave™</b>												●						●
<b>DrenaMontage™</b>												●						●
<b>BrükStone®</b>												●	●					
<b>Kastle Flats</b> <i>(textured &amp; smooth)</i>						●			●									●
<b>Bulovar® &amp; Bulovar® Max</b>	●						●							●		●		
<b>Strassen® Wall II</b> <i>Pallet A &amp; Trapezoid</i>					●							●						●
<b>Strassen® Wall Tumbled</b> <i>Pallet A &amp; Trapezoid</i>					●			●				●	●					●
<i>Pallet B</i>								●				●	●					●
<i>Pallet C</i>								●				●	●					●
<i>Strassen® Wall Precast Cap</i>					●				●									
<b>Madera Wall</b>								●				●	●					●
<i>Madera Split Cap</i>								●				●	●					●
<b>Morteza Wall</b>								●				●	●					●
<i>Morteza Split Cap</i>					●			●				●	●					●
<b>PanoMur® Wall</b> <i>(curved &amp; straight)</i>												●						●
<i>PanoMur® Split Cap</i>												●						●
<b>Round Fire Pit Cap</b>					●					●								
<b>Pillar Cap</b>					●					●								
<b>Step Unit</b>			●		●			●				●	●					●

For best blend results, always select from multiple cubes. Color selection subject to change without notice. Colors are not limited. For special orders, call your Borgert representative. **Not all products are stocked in Colorado.**

# RESIDENTIAL WARRANTY

## Limited Warranty for Non-Permeable Interlocking Concrete Pavers, Permeable Concrete Pavers and Retaining Walls in Residential Applications

Borgert Products, Inc. is pleased to provide this lifetime warranty on the structural integrity of its paving stones and retaining wall to the original purchaser for residential applications. A residential application for retaining walls and pavers is limited to a driveway, patio or similar use for a single-family residence. The original sales receipt is required for all warranty claims. Borgert Products has a minimum of one year from the time it receives notice to make a determination on a warranty claim. If Borgert Products approves the claim, it may at its option either replace the affected pavers or refund the original purchase price of the pavers to the original purchaser. Color matching is not guaranteed and replacement labor for removal or reinstallation is not included in this warranty. This warranty does not cover normal wear and tear, accidental damage or damage caused by improper installation or abuse such as chipping, breakage, overloading, uneven bedding, abrasion, etc. Efflorescence is not a manufacturing defect and is not covered by this warranty. This warranty is also void if the pavers are not installed using installation methods approved by Borgert Products, Inc., or if the pavers are damaged due to failure to clean and maintain them properly. Please see [www.icpi.org](http://www.icpi.org) for more information regarding installation and maintenance of pavers. Borgert Products, Inc. shall not be liable for incidental, punitive, exemplary, indirect or consequential damages, or lost profits arising under or relating to the purchase and use of its products. This is the only warranty provided by Borgert Products, Inc. Borgert Products, Inc. disclaims all other warranties, expressed or implied.



### MAIN OFFICE

8646 Ridgewood Road, P.O. Box 39

St. Joseph, MN 56374

**PHONE** 320.363.4671

**FAX** 320.363.8516

800.622.4952 | [BorgertProducts.com](http://BorgertProducts.com)

© 2023 Borgert Products, Inc. All rights reserved. 122225000

DISTRIBUTED BY: